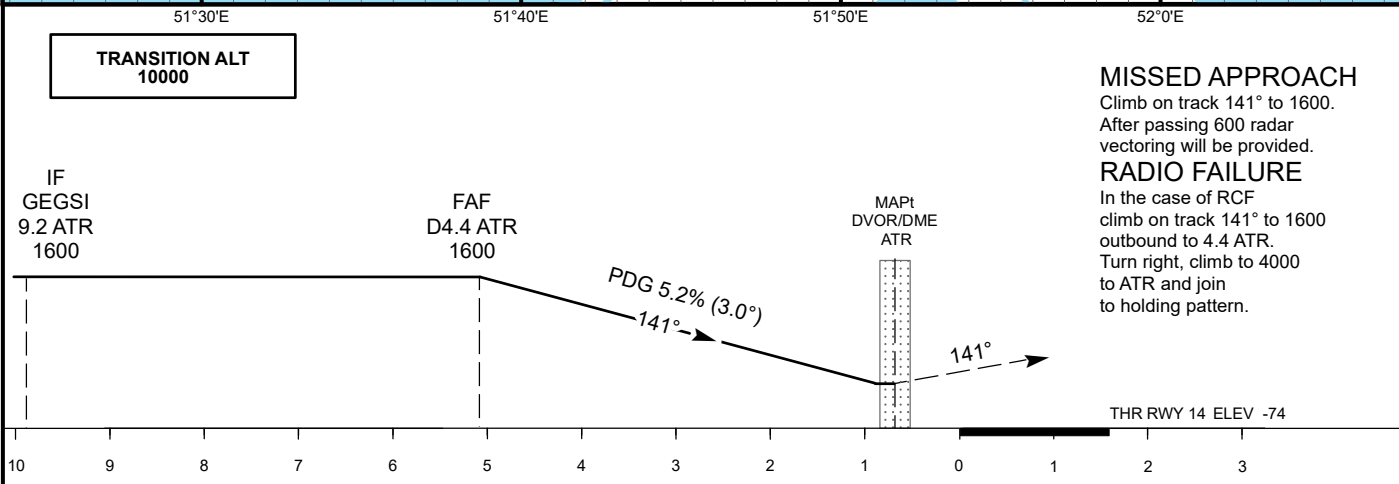
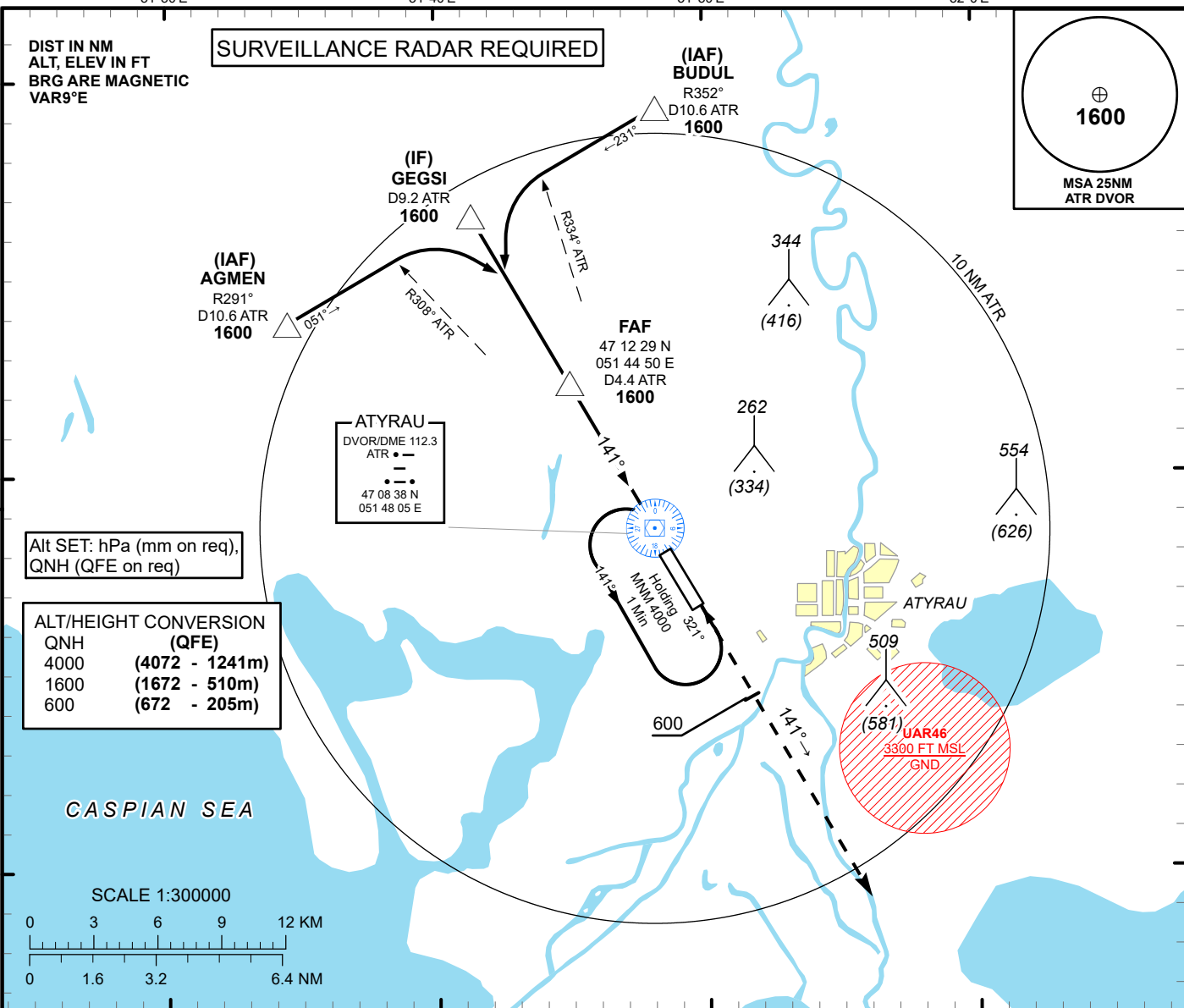


INSTRUMENT  
APPROACH  
CHART - ICAO

AERODROME ELEV -72 FT  
HEIGHTS RELATED TO  
AD ELEV

ATYRAU TOWER 118.1  
ATYRAU ATIS (EN) 127.4  
ATYRAU ATIS (RU) 126.6

ATYRAU  
VOR/DME Y  
RWY 14



Aircraft Category		A	B	C	D	DIST to THR	NM	5.1	4	3	2	1	
Straight-in Approach OCA/H						DME ATR	NM	4.4	3.3	2.3	1.3	0.7	
	VOR/DME	210(280)	210(280)	210(280)	210(280)	ALTITUDE	FT	1600	1268	944	621	300	
						HEIGHT	FT	(1672)	(1340)	(1016)	(693)	(372)	
Aerodrome Operating Minima MDH ft x RVR (CMV)	VOR/DME												
						GS	Kt	80	100	120	140	160	180
						Desc.Rate ( 5.2%)	ft/min	420	530	630	740	840	950
						FAF-MAPT (4.4 ATR)	min:sec	3:20	2:40	2:13	1:54	1:40	1:29

ATYRAU  
VOR/DME Y

AERONAUTICAL DATA TABULATION

VOR/DME approach to RWY14 from AGMEN, GEGSI, BUDUL	
Fix/point	Coordinates
ATR DVOR/DME	47° 08' 38,2"N 051° 48' 05,4"E
(FAF) D4.4 ATR	47° 12' 28,62"N 051° 44' 50,14"E
GEGSI (IF) D9.2 ATR	47° 16' 34,26"N 051° 41' 19,19"E
AGMEN (IAF) R291° ATR, D10.6 ATR	47° 13' 51,60"N 051° 34' 27,75"E
BUDUL (IAF) R352° ATR, D10.6 ATR	47° 19' 16,51"N 051° 48' 11,32"E
THR RWY 14	47° 08' 01.45"N 051° 48' 36.66"E
Final approach descent angle is 3.0°	